

Ribosomal Protein L3 Polyclonal Antibody
Catalog # AP72288**Specification****Ribosomal Protein L3 Polyclonal Antibody - Product Information**

| | |
|-------------------|------------------------|
| Application | WB, IHC-P |
| Primary Accession | P39023 |
| Reactivity | Human, Mouse, Rat |
| Host | Rabbit |
| Clonality | Polyclonal |

Ribosomal Protein L3 Polyclonal Antibody - Additional Information**Gene ID** 6122**Other Names**

RPL3; OK/SW-cl.32; 60S ribosomal protein L3; HIV-1 TAR RNA-binding protein B; TARBP-B

Dilution

WB~~Western Blot: 1/500 - 1/2000. Immunohistochemistry: 1/100 - 1/300. ELISA: 1/20000. Not yet tested in other applications.

IHC-P~~N/A

Format

Liquid in PBS containing 50% glycerol, 0.5% BSA and 0.09% (W/V) sodium azide.

Storage Conditions

-20°C

Ribosomal Protein L3 Polyclonal Antibody - Protein Information**Name** RPL3**Function**

Component of the large ribosomal subunit (PubMed: 12962325, PubMed: 23636399, PubMed: 32669547, PubMed: 35674491). The ribosome is a large ribonucleoprotein complex responsible for the synthesis of proteins in the cell (PubMed: 12962325, PubMed: 23636399, PubMed: 32669547).

Cellular Location

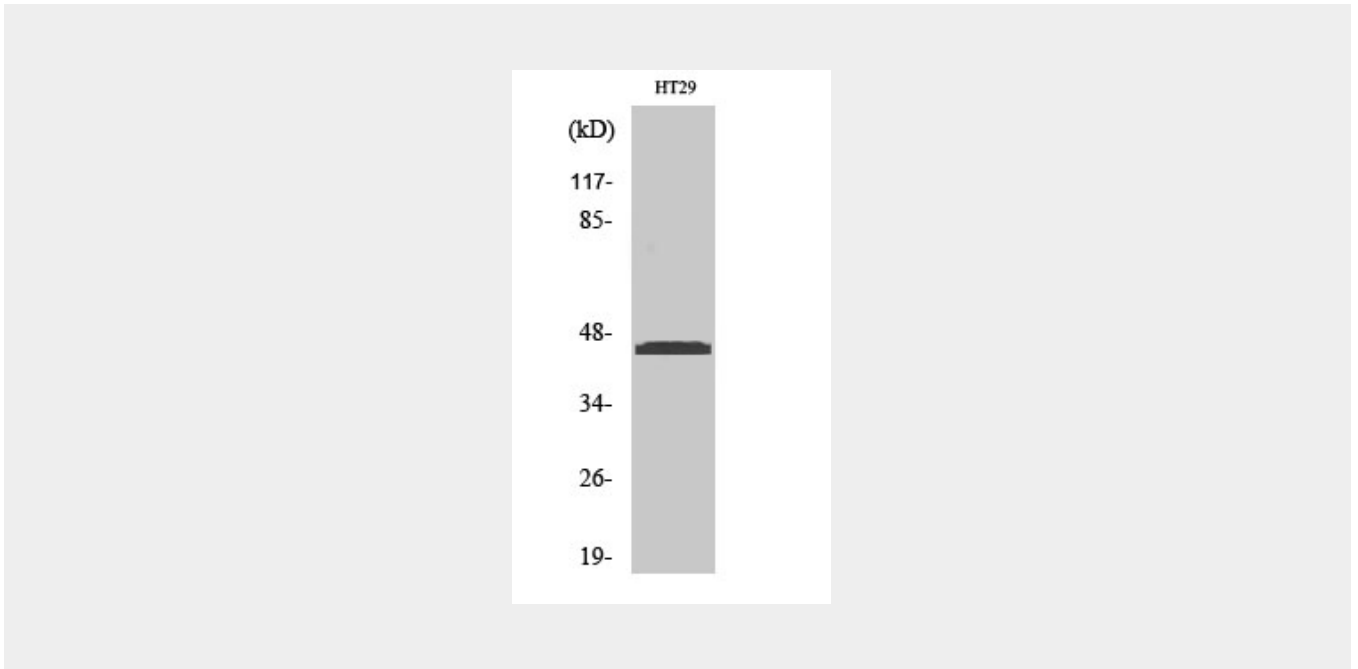
Nucleus, nucleolus. Cytoplasm

Ribosomal Protein L3 Polyclonal Antibody - Protocols

Provided below are standard protocols that you may find useful for product applications.

- [Western Blot](#)
- [Blocking Peptides](#)
- [Dot Blot](#)
- [Immunohistochemistry](#)
- [Immunofluorescence](#)
- [Immunoprecipitation](#)
- [Flow Cytometry](#)
- [Cell Culture](#)

Ribosomal Protein L3 Polyclonal Antibody - Images



Ribosomal Protein L3 Polyclonal Antibody - Background

The L3 protein is a component of the large subunit of cytoplasmic ribosomes.